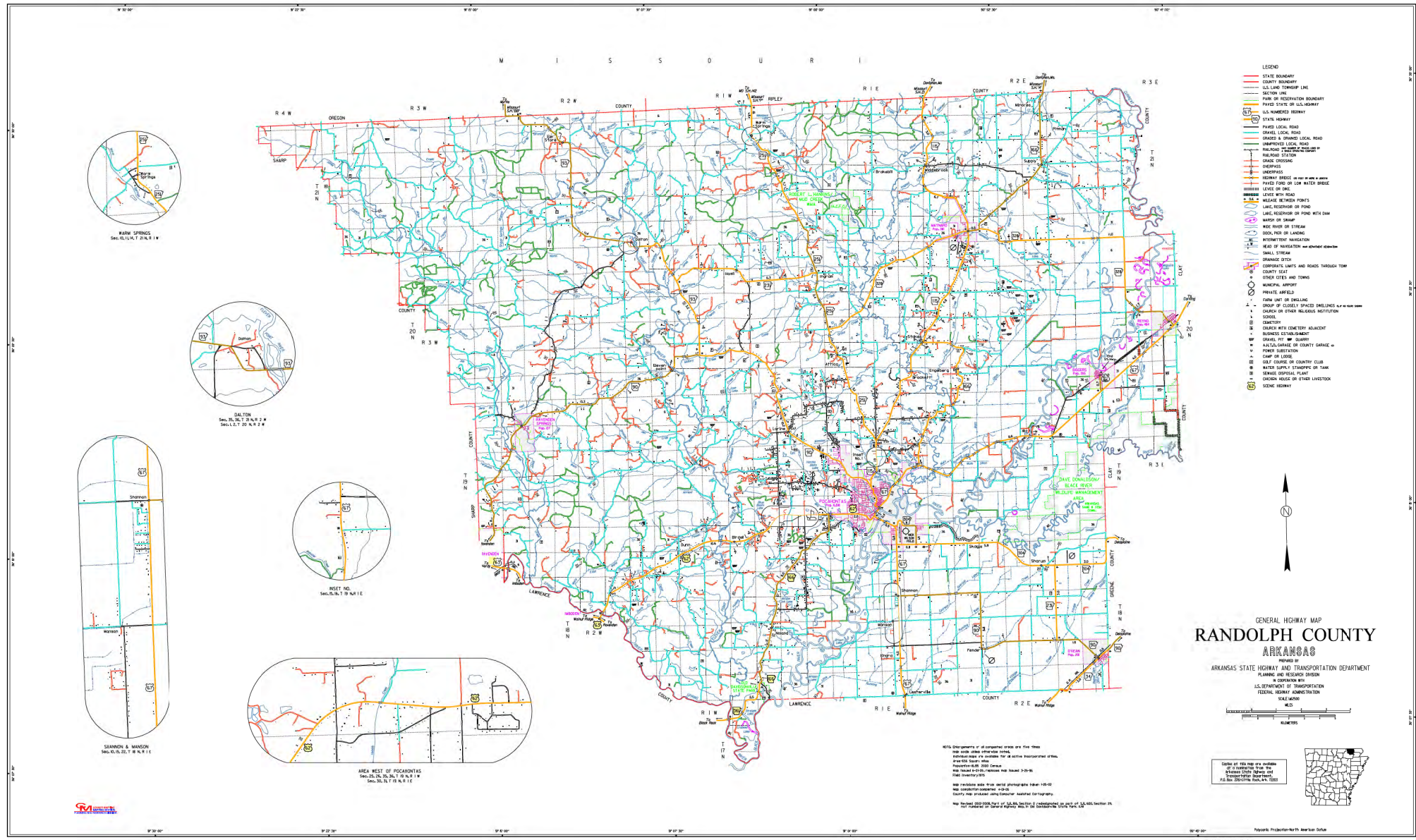


M I S S O U R I

97° 30' 00" 97° 45' 00" 98° 00' 00" 98° 15' 00" 98° 30' 00" 98° 45' 00" 99° 00' 00"



RAINY SPRINGS
Sec. 10, 11, 12, T. 21 N., R. 1 E.



DALTON
Sec. 16, 17, 18, 19, 20, 21, 22, T. 20 N., R. 2 W.



SHANNAN & MANSON
Sec. 20, 21, 22, T. 18 N., R. 1 E.



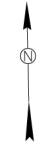
REET NO.
Sec. 24, 25, T. 19 N., R. 1 E.



AREA WEST OF POCHARDVILLE
Sec. 25, 26, 27, 28, 29, 30, 31, 32, T. 18 N., R. 1 W.

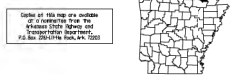
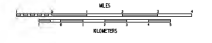


- LEGEND**
- STATE BOUNDARY
 - COUNTY BOUNDARY
 - U.S. LAND TOWNSHIP LINE
 - SECTION LINE
 - PAVE OF RECREATION BOUNDARY
 - PAVED STATE OR U.S. HIGHWAY
 - U.S. NUMBERED HIGHWAY
 - STATE HIGHWAY
 - PAVED LOCAL ROAD
 - GRAVEL LOCAL ROAD
 - GRADE & UNPAVED LOCAL ROAD
 - UNIMPROVED LOCAL ROAD
 - RAILROAD STATION
 - RAILROAD STATION
 - GRADE CROSSING
 - DEEPASS
 - RAILROAD BRIDGE
 - PAVED FORD OR LOW WATER BRIDGE
 - LEVEL OR DAM
 - LEVEL WITH ROAD
 - WELLSHED BETWEEN POINTS
 - LAND RESERVOIR OR POND
 - LAND RESERVOIR OR POND WITH DAM
 - WARD OR DAM
 - WATER POND OR STREAM
 - DOCK, PIER OR LAUNDRY
 - HYDROELECTRIC GENERATION
 - HEAD OF NAVIGATION (see colored notation)
 - SMALL STREAM
 - SPRAWLING STRIP
 - CORPORATE LIMITS AND ROADS THROUGH TOWN
 - COUNTY SEAT
 - OTHER CITIES AND TOWNS
 - MUNICIPAL AIRPORT
 - PRIVATE AIRFIELD
 - FARM UNIT OR SHEDDING
 - GROUP OF CLOSELY SPACED SHEDDINGS (see note)
 - CHURCH OR OTHER RELIGIOUS INSTITUTION
 - SCHOOL
 - Cemetery
 - CHURCH WITH CEMETERY ADJACENT
 - BUSINESS ESTABLISHMENT
 - CHANGELING OR BUS STATION
 - AIRFIELD GARAGE OR COUNTY GARAGE
 - PUBLIC SUBSTATION
 - CAMP OR LODGE
 - GOLF COURSE OR COUNTRY CLUB
 - WATER SUPPLY STATION OR TANK
 - GENERIC FORESTAL PLANT
 - DECKEN HOUSE OR OTHER LIVESTOCK
 - SCenic HIGHWAY



GENERAL HIGHWAY MAP RANDOLPH COUNTY ARKANSAS

PREPARED BY
ARKANSAS STATE HIGHWAY AND TRANSPORTATION DEPARTMENT
PLANNING AND RESEARCH DIVISION
IN COOPERATION WITH
U.S. DEPARTMENT OF TRANSPORTATION
FEDERAL HIGHWAY ADMINISTRATION
SCALE: 1:60,000
M.D.



NOTE: Alterations of all commercial grades are from 1958.
Map made under other than metric.
Elevation shown in feet unless otherwise noted.
Fence (No. 100) shown in red.
Inventory done 1958.
Map issued under authority of Arkansas Highway Act of 1917.
Map made under authority of Arkansas Highway Act of 1917.
Map made under authority of Arkansas Highway Act of 1917.
Map made under authority of Arkansas Highway Act of 1917.